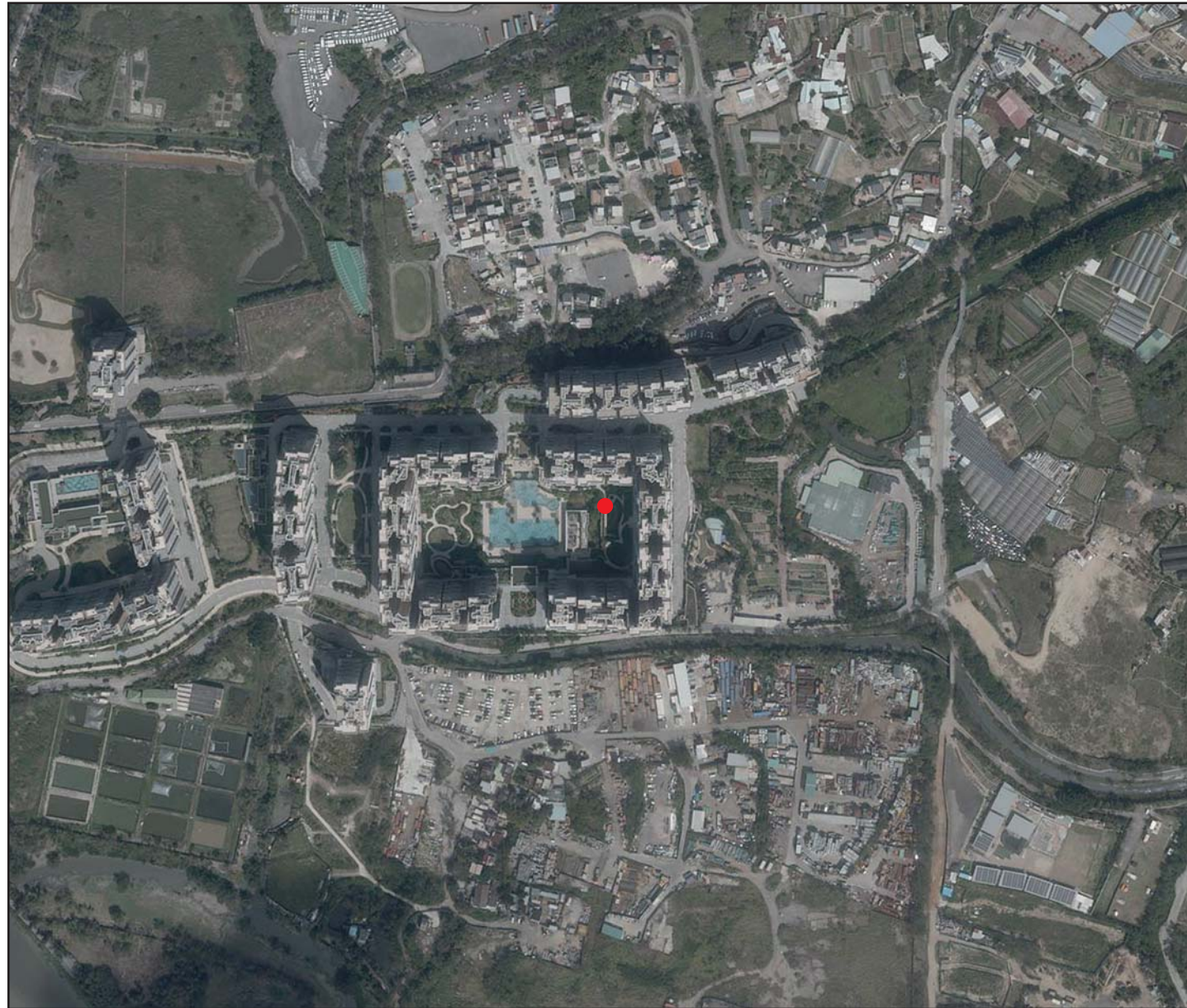


AERIAL PHOTOGRAPH OF THE PHASE 期數的鳥瞰照片

Adopted from part of the aerial photograph taken by the Survey and Mapping Office of the Lands Department at a flying height of 6,000 feet, photo No. E154943C, date of flight: 10 March 2022.

摘錄自地政總署測繪處在6,000呎的飛行高度拍攝之鳥瞰照片，照片編號E154943C，飛行日期：2022年3月10日。



● Location of the Phase
發展項目期數的位置

Survey and Mapping Office, Lands Department, The Government of HKSAR
© Copyright reserved – reproduction by permission only.

香港特別行政區政府地政總署測繪處©版權所有，未經許可，不得翻印。

Note:

1. Copy of the aerial photograph of the Phase is available for free inspection at the sales office during opening hours.
2. The aerial photograph may show more than the area required under the Residential Properties (First-hand Sales) Ordinance due to technical reasons that the boundary of the Phase is irregular.

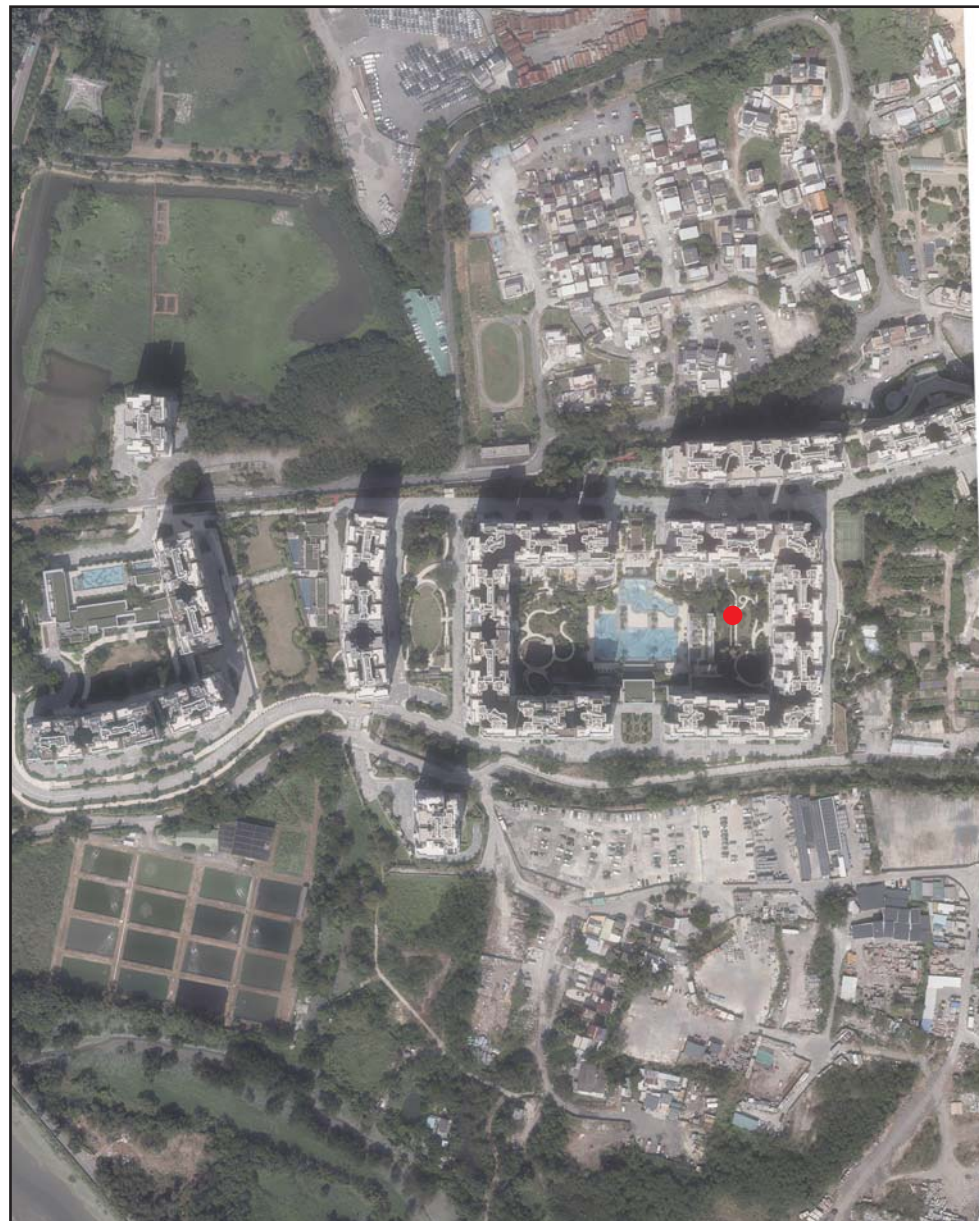
備註：

1. 發展項目期數的鳥瞰照片之副本可於售樓處開放時間內免費查閱。
2. 由於發展項目期數的邊界不規則的技術原因，此鳥瞰照片所顯示的範圍可能超過《一手住宅物業銷售條例》所規定的範圍。

AERIAL PHOTOGRAPH OF THE PHASE 期數的鳥瞰照片

Adopted from part of the aerial photograph taken by the Survey and Mapping Office of the Lands Department at a flying height of 6,900 feet, photo No. E237409C, date of flight: 24 October 2024.

摘錄自地政總署測繪處在6,900呎的飛行高度拍攝之鳥瞰照片，照片編號E237409C，飛行日期：2024年10月24日。



This blank area falls outside
the coverage of the aerial photograph.
此空白範圍不為本鳥瞰照片所覆蓋。

● Location of the Phase
發展項目期數的位置

Survey and Mapping Office, Lands Department, The Government of HKSAR
© Copyright reserved – reproduction by permission only.

香港特別行政區政府地政總署測繪處©版權所有，未經許可，不得翻印。

Note:

1. Copy of the aerial photograph of the Phase is available for free inspection at the sales office during opening hours.
2. The aerial photograph may show more than the area required under the Residential Properties (First-hand Sales) Ordinance due to technical reasons that the boundary of the Phase is irregular.

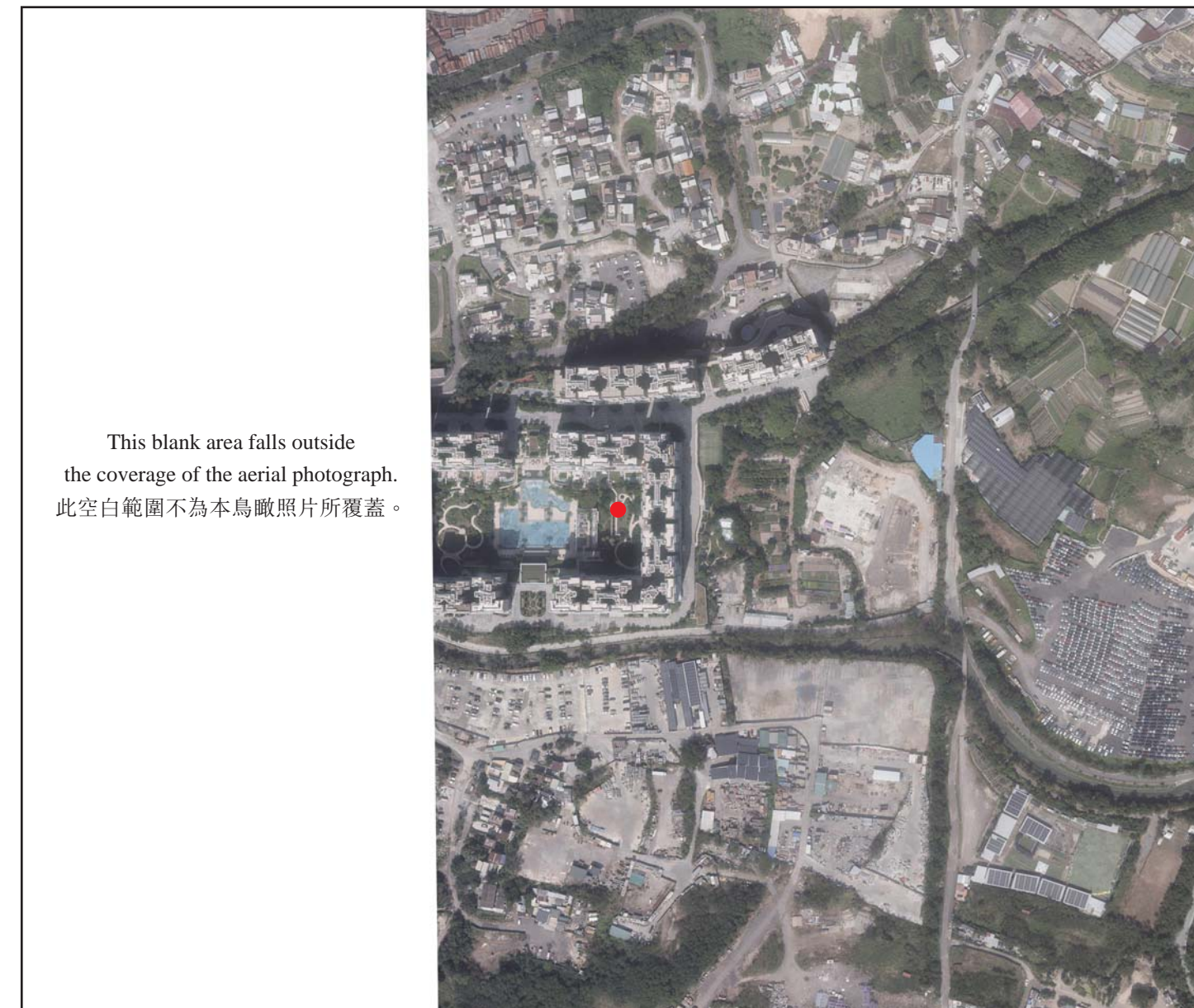
備註：

1. 發展項目期數的鳥瞰照片之副本可於售樓處開放時間內免費查閱。
2. 由於發展項目期數的邊界不規則的技術原因，此鳥瞰照片所顯示的範圍可能超過《一手住宅物業銷售條例》所規定的範圍。

AERIAL PHOTOGRAPH OF THE PHASE 期數的鳥瞰照片

Adopted from part of the aerial photograph taken by the Survey and Mapping Office of the Lands Department at a flying height of 6,900 feet, photo No. E237407C, date of flight: 24 October 2024.

摘錄自地政總署測繪處在6,900呎的飛行高度拍攝之鳥瞰照片，照片編號E237407C，飛行日期：2024年10月24日。



● Location of the Phase
發展項目期數的位置

Survey and Mapping Office, Lands Department, The Government of HKSAR
© Copyright reserved – reproduction by permission only.

香港特別行政區政府地政總署測繪處©版權所有，未經許可，不得翻印。

Note:

1. Copy of the aerial photograph of the Phase is available for free inspection at the sales office during opening hours.
2. The aerial photograph may show more than the area required under the Residential Properties (First-hand Sales) Ordinance due to technical reasons that the boundary of the Phase is irregular.

備註：

1. 發展項目期數的鳥瞰照片之副本可於售樓處開放時間內免費查閱。
2. 由於發展項目期數的邊界不規則的技術原因，此鳥瞰照片所顯示的範圍可能超過《一手住宅物業銷售條例》所規定的範圍。